

 **Spec-Brik**®

 **CONCRETE
PRODUCTS
GROUP**
INNOVATIVE CONCRETE
MASONRY SYSTEMS

Cost-Effective
Masonry Veneers

**SPEC-BRIK
VENEER**

Great choice for
veneer wall applica-
tions

12 Standard Color
Blends

Much more cost-
effective than clay
brick veneer walls

Beautiful and Durable
Masonry Finish

Consistent colors
nationwide

Full design library



Spec-Brik® Veneers

With Spec-Brik veneers, you have a choice of 12 complimentary standard blended colors, and custom colors are also available. These colors are made to national standards and rigorously checked to assure that you get the color you select, wherever you may be building your project.



Applications

- Concrete masonry veneers with brick aesthetics (4" unit width) in all Climate Zones.

Features

- Made with integral water repellent for superior moisture penetration resistance.

Construction Efficiency

- Much more efficient and cost-effective than constructing clay brick walls with frame, masonry or other back-up walls

Aesthetics

- Scale: 4"x16" face dimension
- Colors: Available in 12 standard brick blend colors; consistent nationwide.

Spec-Brik® Colors

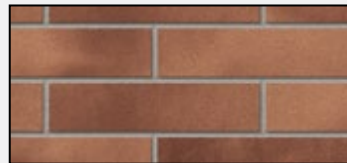
Spec-Brik is available in 12 Standard Colors (custom colors are also available)



Basalt Blend



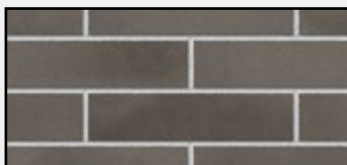
Chesapeake Blend



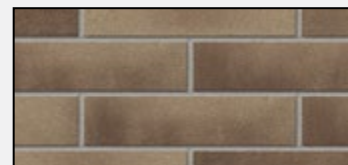
Delaware Blend



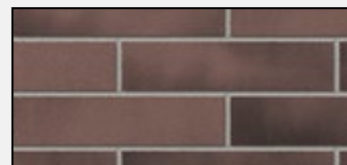
Dixon Blend



Flint Blend



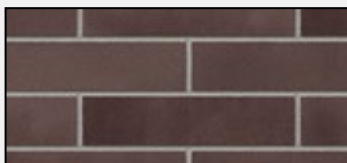
Gardner Blend



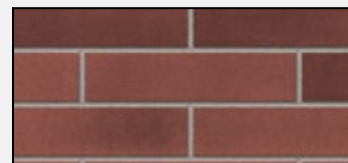
Houston Blend



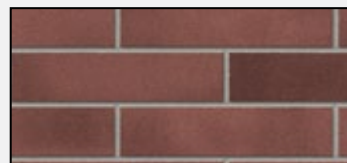
Jefferson City Blend



Panama City Blend



Philadelphia Blend



St. Cloud Blend

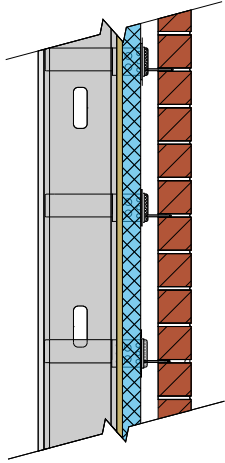


Stanton Blend

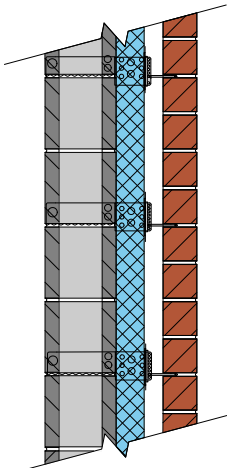
The colors above are digital renderings of blended Spec-Brik colors. Due to the limitations of the printing process and the importance of viewing masonry materials under realistic site lighting conditions, we strongly recommend viewing a sample board before making color selections and using a job site sample panel as the basis for acceptance of the final work.

Energy Code Compliance

SPEC-BRIK Veneers are suitable for all energy climate zones when properly designed. With proper anchorage, the veneer wall system will meet structural requirements even when built with thick layers of continuous insulation, and a two-inch air gap. To provide context, up to 4 inches of insulation and a 2 inch airspace may be required in Zone 8.



| Metal Frame Insulation: | Compliance Method | 2012 and 2015 IECC Max Climate Zone |
|--|-----------------------------|--|
| 2" EPS rigid board R-8 (Continuous Insulation) Blanket Insulation R-13 | Prescriptive R-Value Table | Zone 8 Zone 6 (Group R) Zone 8 (R) requires R-17.5ci |
| 3" XPS rigid board R-15 (Continuous Insulation) Assembly U-Factor: 0.051 | Prescriptive U-Factor Table | Zone 7 Zone 7 (Group R) Zone 8 requires U-0.045 |
| 3" XPS rigid board R-16.8 (Continuous Insulation) Assembly U-Factor: 0.047 | Prescriptive U-Factor Table | Zone 7 Zone 7 (Group R) Zone 8 requires U-0.045 |
| 4" EPS Rigid Board – R-20 (Continuous Insulation) Assembly U-Factor: 0.041 | Prescriptive U-Factor Table | Zone 8 Zone 8 (Group R) |



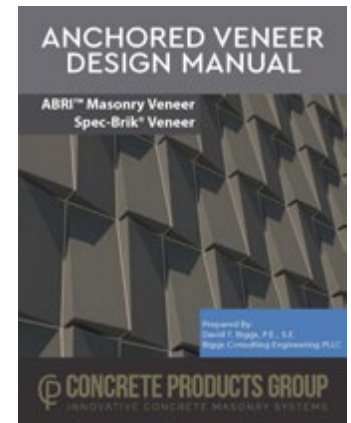
| Masonry Cavity Wall 8x8x16 backup wall Insulation: | Compliance Method | 2012 and 2015 IECC Max Climate Zone |
|--|-----------------------------|---|
| 3" XPS rigid board R-15 (Continuous Insulation) Assembly U-Factor: 0.053 | Prescriptive U-Factor Table | Zone 7 Zone 7 (Group R) Zone 8 requires U-0.045 |
| 3" XPS rigid board R-16.8 (Continuous Insulation) Assembly U-Factor: 0.049 | Prescriptive U-Factor Table | Zone 7 Zone 7 (Group R) Zone 8 requires U-0.045 |
| 4" EPS Rigid Board – R-20 (Continuous Insulation) Assembly U-Factor: 0.042 | Prescriptive U-Factor Table | Zone 8 Zone 8 (Group R) |

Resources for Designers

Samples: please contact us at info@concreteproductsgroup.com to arrange delivery of Spec-Brik samples.

Design Resources:

- **Color Rendering software, Masonry Designer, with Revit plug-in.** This is available for download at www.concreteproductsgroup.com
- **Anchored Veneer Design MAnual.** The Concrete Products Group offers an Anchored Veneer Design Manual which provides Code based guidance on how to design walls using anchored veneers, including a calculator for the spacing of anchorage. If you are interested in getting a copy of this manual, please contact us at info@concreteproductsgroup.com.

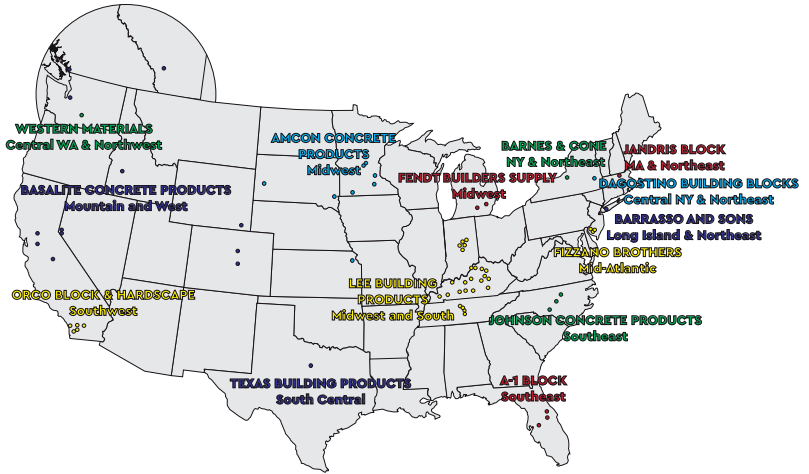


Nationwide Availability

The Concrete Products Group LLC (CPG) consists of regional market leaders in the concrete products industry. CPG is organized to provide consistent, top-quality products to regional and national customers. CPG provides industry leading support and service throughout the nation.

We provide a comprehensive set of design resources to support designers, including a library of CAD Details, design notes and videos and color selection and rendering tools that are available via a Revit® plug-in.

Please contact us if we can assist with your next project.



800-789-0872

www.concreteproductsgroup.com

A-1 BLOCK
1617 South
Division Avenue
Orlando, FL 32805

**AMCON CONCRETE
PRODUCTS, LLC**
2025 Centre Pointe Blvd.,
Suite 300
Mendota Heights, MN
55120-1221

BARNES & CONE
P.O. Box 280
5894 Court St. Rd.
Syracuse, NY
13206-0280

**BASALITE CONCRETE
PRODUCTS LLC**
605 Industrial Way
Dixon, CA
95620

BARRASSO AND SONS INC
160 Floral Park Street
Islip Terrace, NY
11752

**DAGOSTINO BUILDING
BLOCKS, INC.**
1111 Altamont Avenue
Schenectady, NY 12303

**FENDT BUILDERS
SUPPLY**
22005 Gill Rd,
Farmington, MI
48335

**FIZZANO BROTHERS
CONCRETE
PRODUCTS, INC.**
1776 Chester Pike
Crum Lynne, PA
19022-1299

JANDRIS BLOCK
202 High St.
Gardner, MA
01440

**JOHNSON CONCRETE
COMPANY**
217 Klumac Road
Salisbury, NC 28144

**LEE BUILDING
PRODUCTS**
4301 Industrial Drive
Bowling Green, KY 42101

**ORCO BLOCK &
HARDSCAPE**
11100 Beach Blvd.
Stanton, CA
90680-0129

**TEXAS BUILDING
PRODUCTS**
3261 Highway 108
Strawn, Texas 76454

**WESTERN MATERIALS
COMPANY**
1202 South First Street
Yakima, WA 98901



CONCRETE PRODUCTS GROUP

INNOVATIVE CONCRETE MASONRY SYSTEMS

© 2022 Concrete Products Group, LLC
All rights reserved. RD 05192022