

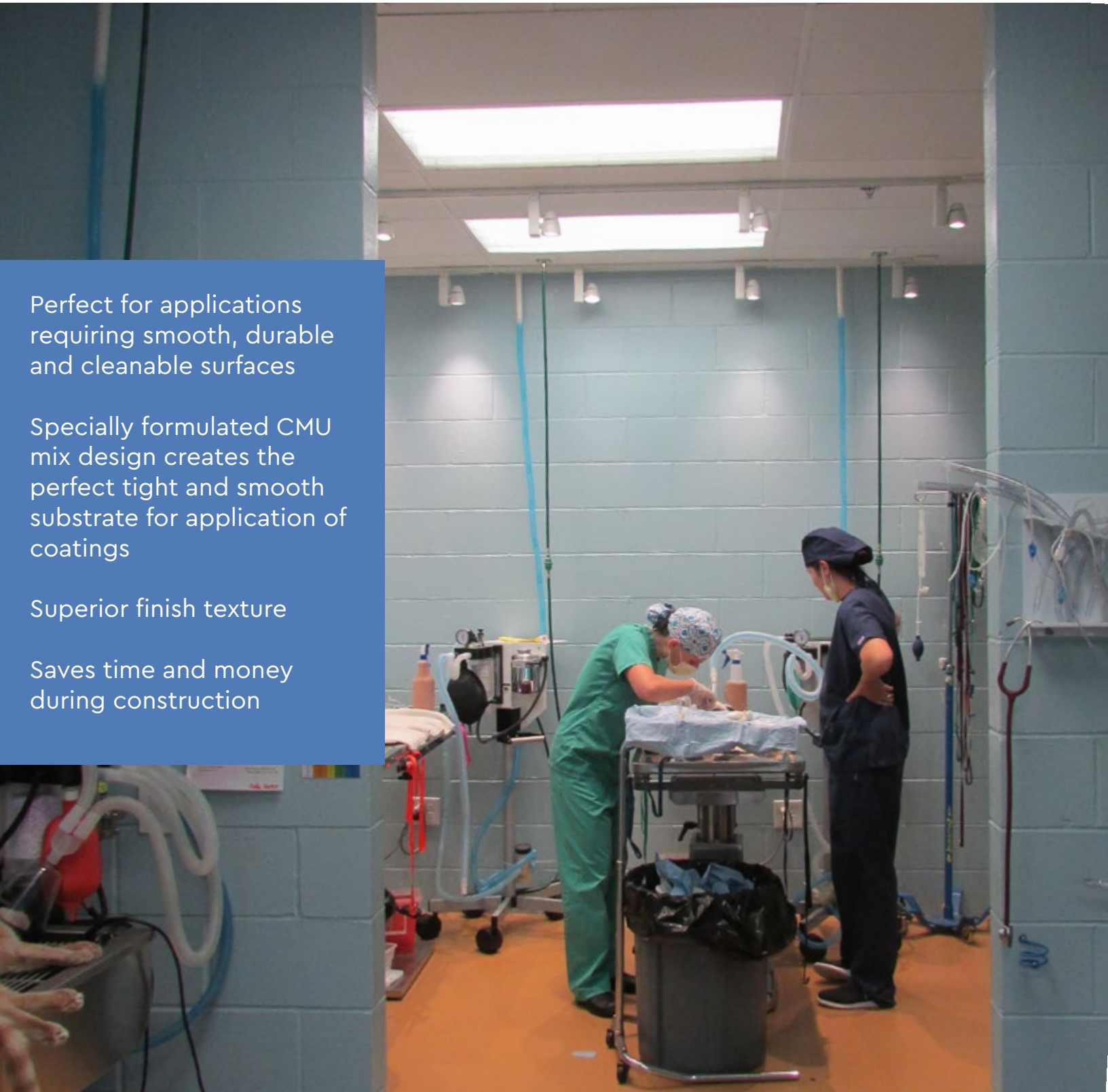
Smooth Textured CMU for High Performance Coated Masonry Walls

Perfect for applications
requiring smooth, durable
and cleanable surfaces

Specially formulated CMU
mix design creates the
perfect tight and smooth
substrate for application of
coatings

Superior finish texture

Saves time and money
during construction

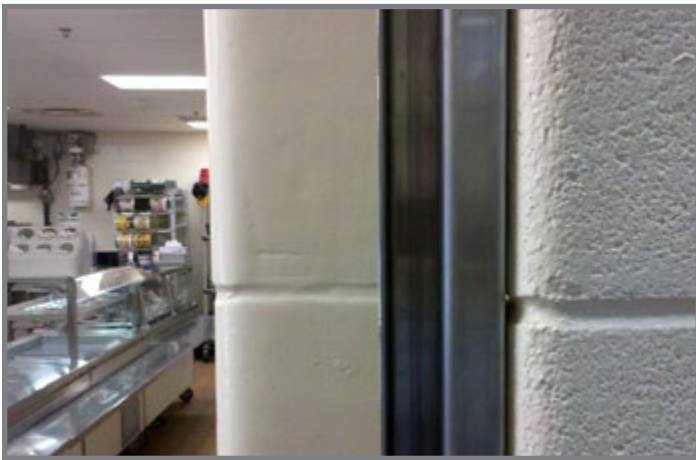


Spec-Finish®

COATED MASONRY SYSTEM



Spec-Surface block (bottom) vs. Ordinary CMU
The smooth and tight surface texture of Spec-Surface Block saves money by requiring fewer filler coats



Spec-Finish Level III vs. Coated Regular Block
The combination of high performance coatings and Spec-Finish block provides a pin-hole free, easily cleaned, durable smooth surface



Tnemec Coatings are available in a wide variety of colors

SPEC-FINISH® combines special smooth and tight textured SPEC-SURFACE™ block from CPG with high performance coatings from Tnemec. SPEC-SURFACE may also be used with ordinary paint coatings

Primary uses

- Coated walls where a pinhole free surface is required.
- Coated walls for applications requiring a high performance surface finish, such as hospital interiors, food preparation areas, animal care facilities, clean rooms, restroom facilities and other areas requiring easy cleaning and/or maintenance of hygienic conditions.
- Coated walls for high vapor conditions, such as indoor swimming pools, aquariums or vivariums

Features

- SPEC-FINISH blocks are made with a special mix design including a pre-conditioner that results in an especially tight and smooth surface texture.
- SPEC-FINISH walls offer superior performance for applications with exacting hygienic requirements – both the block and mortar joints are fully coated, and the coatings may also be applied to flooring and ceilings to provide comprehensive coverage

Construction Efficiency

- The smooth and tight surface texture results in labor and time savings when compared to using traditional CMU by minimizing need for block filler layers prior to painting or coating.
- SPEC-FINISH is significantly less expensive than alternate approaches for its intended applications, such as glazed tile or CMU.

SPEC-FINISH® System Levels

FOUR CHEMICAL-RESISTANT, HIGH-PERFORMANCE FINISH LEVELS TO MEET A VARIETY OF AESTHETIC AND PERFORMANCE REQUIREMENTS

LEVEL I
STANDARD BLOCK FINISH



- SPEC-FINISH® Block**
Special mix design and pre-conditioner
- Prime Coat**
Waterborne Cementitious Filler
- Intermediate Coat**
Modified Polyamine Epoxy
- Finish Coat**
Aliphatic Polyurethane

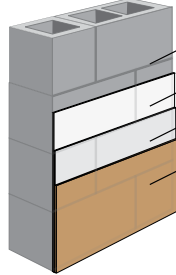
Application: Roller-applied



*Standard Block Finish
(Level I)*

Cost-Effective for Lighter Duty Applications

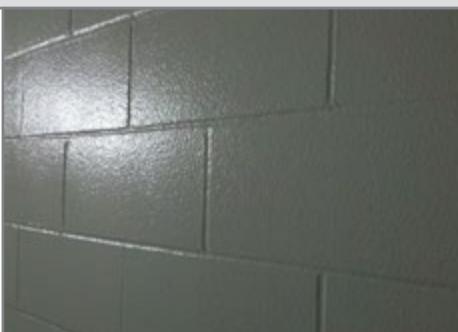
LEVEL II
**ORANGE PEEL BLOCK FINISH
(PINHOLE FREE SURFACE)**



- SPEC-FINISH® Block**
Special mix design and pre-conditioner
- Prime Coat**
Waterborne Cementitious Filler
- Intermediate Coat**
Modified Polyamine Epoxy
- Finish Coat**
Aliphatic Polyurethane

Application: Spray-applied

**Prime coat must be back-rolled and squeegeed.*



*Orange Peel Block Finish
(Level II)*

Pin-Hole Free Surface for greater cleanability

LEVEL III
**SMOOTH BLOCK FINISH
(PINHOLE FREE SURFACE)**



- SPEC-FINISH® Block**
Special mix design and pre-conditioner
- Prime Coat* (2 coats)**
Waterborne Cementitious Filler
- Intermediate Coat**
Modified Polyamine Epoxy
- Finish Coat**
Aliphatic Polyurethane

Application: Spray-applied

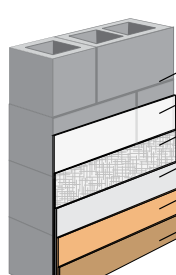
**Prime coat must be back-rolled and squeegeed.*



*Smooth Block Finish
(Level III)*

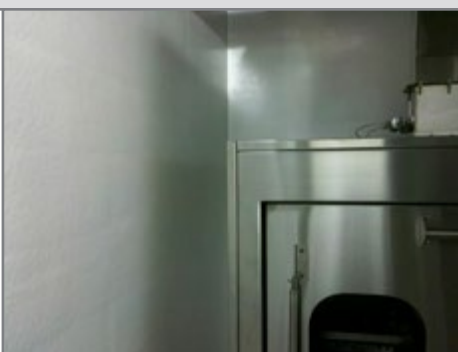
Pin-Hole Free Surface with Smooth Finish

LEVEL IV
**SMOOTH BLOCK FINISH
(PINHOLE FREE SURFACE)**



- SPEC-FINISH® Block**
Special mix design and pre-conditioner
- Skim Coat (troweled)**
Epoxy Filler and Surfacer
- Fiberglass Mat**
Fiberglass Reinforcing Mat
- Saturation Coat**
Modified Polyamine Epoxy
- Intermediate Coat**
Modified Polyamine Epoxy
- Finish Coat**
Aliphatic Polyurethane

Application: Spray-applied



*Smooth Block Finish
(Level IV)*

Pin-Hole Free Surface with Minimal Joint Appearance and Highly Durable Fiberglass Reinforcement

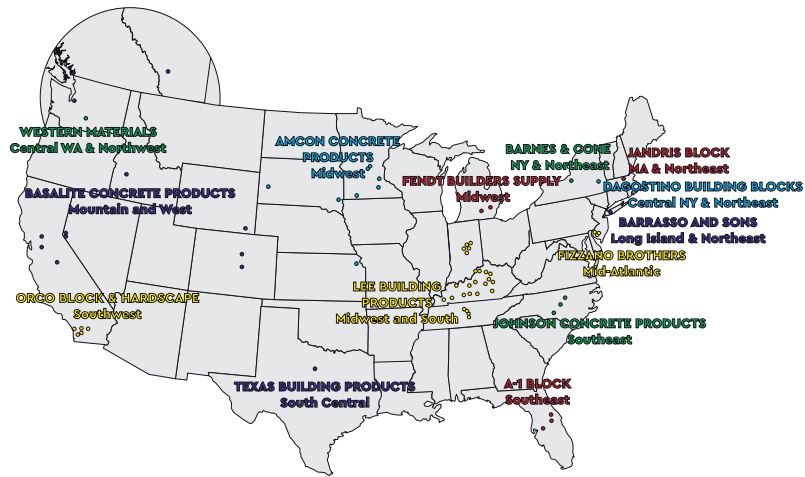
Note: For specific coatings product series recommendations based on desired performance, gloss level, finish texture, and compliance with local air quality regulations, contact your Tnemec representative by calling 1-800-TNEMEC1 or visiting www.tnemec.com/company/contact.

Solutions Available Nationwide

The Concrete Products Group (CPG) consists of regional market leaders in the concrete products industry. CPG is organized to provide consistent, top-quality products to regional and national customers. CPG provides industry leading support and service throughout the nation.

We provide a comprehensive set of design resources to support designers, including a library of CAD Details, a Thermal properties guide, design and construction notes and videos and color selection and rendering tools that are available via a Revit® plug-in.

Please contact us if we can assist with your next project.



Manufacturing Locations

www.concreteproductsgroup.com
info@concreteproductsgroup.com
 800-789-0872

A-1 BLOCK
 1617 South
 Division Avenue
 Orlando, FL 32805

AMCON CONCRETE
 PRODUCTS, LLC
 2025 Centre Pointe Blvd.,
 Suite 300
 Mendota Heights, MN
 55120-1221

BARNES & CONE
 P.O. Box 280
 5894 Court St. Rd.
 Syracuse, NY
 13206-0280

BASALITE CONCRETE
 PRODUCTS LLC
 605 Industrial Way
 Dixon, CA
 95620

BARRASSO AND SONS INC
 160 Floral Park Street
 Islip Terrace, NY
 11752

DAGOSTINO BUILDING
 BLOCKS, INC.
 1111 Altamont Avenue
 Schenectady, NY 12303

FENDT BUILDERS
 SUPPLY
 22005 Gill Rd,
 Farmington, MI
 48335

FIZZANO BROTHERS
 CONCRETE
 PRODUCTS, INC.
 1776 Chester Pike
 Crum Lynne, PA
 19022-1299

JANDRIS BLOCK
 202 High St.
 Gardner, MA
 01440

JOHNSON CONCRETE
 COMPANY
 217 Klumac Road
 Salisbury, NC 28144

LEE BUILDING
 PRODUCTS
 4301 Industrial Drive
 Bowling Green, KY 42101

ORCO BLOCK &
 HARDSCAPE
 11100 Beach Blvd.
 Stanton, CA
 90680-0129

TEXAS BUILDING
 PRODUCTS
 3261 Highway 108
 Strawn, Texas 76454

WESTERN MATERIALS
 COMPANY
 1202 South First Street
 Yakima, WA 98901



CONCRETE PRODUCTS GROUP

INNOVATIVE CONCRETE MASONRY SYSTEMS